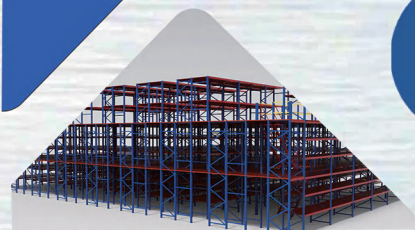




GUANGDONG ORION INTELLIGENT EQUIPMENT LIMITED  
广东奇力智能设备有限公司



RACKING SYSTEM &  
STORAGE EQUIPMENT  
仓储货架 & 仓储设备

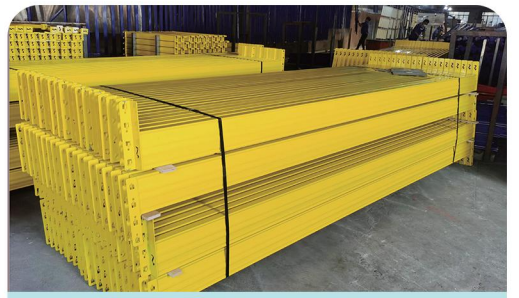


Jasmine

Web : <http://www.orionrack.com>  
E-mail : [jasminezhao@orionrack.com](mailto:jasminezhao@orionrack.com)  
[lucky@orionrack.com](mailto:lucky@orionrack.com)  
Tel: +86 13424131725  
Sevrice Hotline: +86-400-801-8665



Lucky



横梁 Box Beam



立柱 Upright Frame

## Pallet Rack 横梁式货架

1. The simplest and most effective storage shelves;
2. Simple installation and disassembly;
3. Hole spacing: Adjustable every 50mm/75mm;
4. Load-bearing capacity: 5T /layer;
5. It can be derived into double-deep racks and VNA racks.

1. 最简单有效的仓储货架；
2. 安装、拆卸简单；
3. 孔距：每50mm/75mm可调；
4. 承重：5T/层；
5. 可衍生为双深度货架和窄巷式货架。



双深度货架 Double-Deep Rack



窄巷式货架 VNA Rack

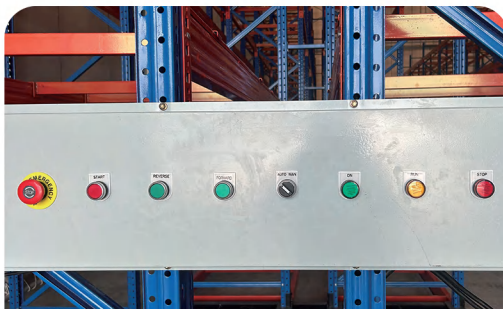
# Mobile Rack 移动货架

1. The racks move along the tracks laid on the ground;
2. Space-saving, with only one channel;
3. Each pallet can be accessed through moving the shelves;
4. High safety, equipped with infrared sensor and emergency stop button.

1. 货架沿铺于地面上的轨道移动；
2. 节省空间，仅有一个通道；
3. 通过移动货架可访问每一个托盘；
4. 安全性高，设有红外感应和紧急停止按钮。



红外感应 Infrared sensor



操作按钮 Operation button





## Mezzanine Floor 钢平台

1. Doubly make use of ground space;
2. Load-bearing capacity: 500-1500kg/m<sup>2</sup>;
3. Large span: 3000-6000mm;
4. Wide range of applications, including production, office work and storage.



1. 双倍利用地面空间;
2. 承重: 500-1500kg/m<sup>2</sup>;
3. 跨度: 3000-6000mm;
4. 应用广泛, 生产、办公、储存。

## Mezzanine Rack 阁楼式货架

1. Heavy-duty racks as the main part;
2. Suitable for storing light and small goods;
3. A wide range of floor panel options;
4. High space utilization rate.



1. 以重型货架作为主体;
2. 适合存取轻小货物;
3. 楼面板选择多样;
4. 空间利用率高。



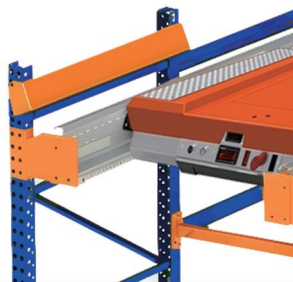


## Radio-shuttle Rack 穿梭式货架

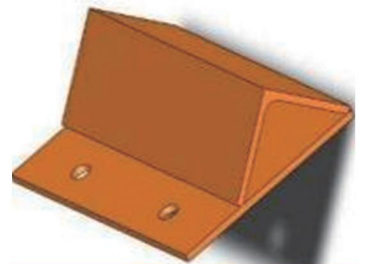
- |  |                       |
|--|-----------------------|
| 1. Semi-automatic storage solution;                      | 1. 半自动存储方案;           |
| 2. Rely on shuttle to stack by themselves on the tracks; | 2. 依靠穿梭车在轨道上自行堆码;     |
| 3. High storage density, Save space and labor costs;     | 3. 储存密度高, 节省空间、人力成本;  |
| 4. Reduce the collision between forklifts and shelves;   | 4. 减少叉车与货架碰撞, 安全系数高;  |
| 5. Flexible operation mode: FIFO / FILO.                 | 5. 作业方式灵活: 先进先出/先进后出. |



穿梭车 Shuttle



轨道 Track



叉车限位板  
Forklift limiting plate

# Drive-in Rack

## 驶入式货架

1. The forklift enters the aisle of the shelf to store and goods.
2. High-density storage, improving space utilization rate;
3. Suitable for storing goods of a single variety in large quantities.
4. The First in, Last Out principle;
5. The height is controlled within 10 meters.

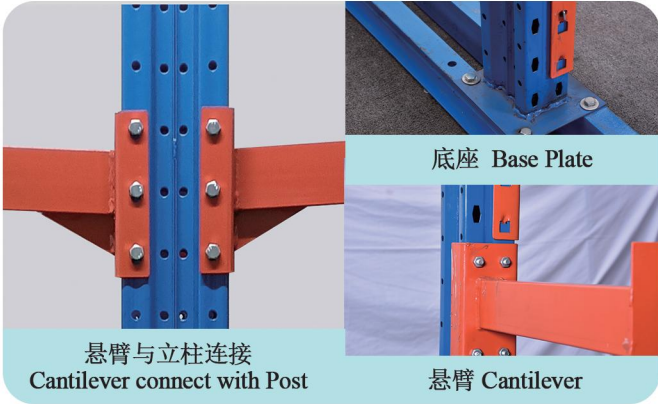


1. 叉车进入货架巷道内存取货物；
2. 高密度储存，提高空间使用率；
3. 适用于存储品种单一批量大的货物；
4. 先进后出原则；
5. 高度控制在10m内。



## Cantilever Rack 悬臂式货架

1. Suitable for storing long materials;
2. Easy to disassemble and assemble;
3. Stable structure and high safety;
4. It can be used in combination with mezzanines and mobile shelves.



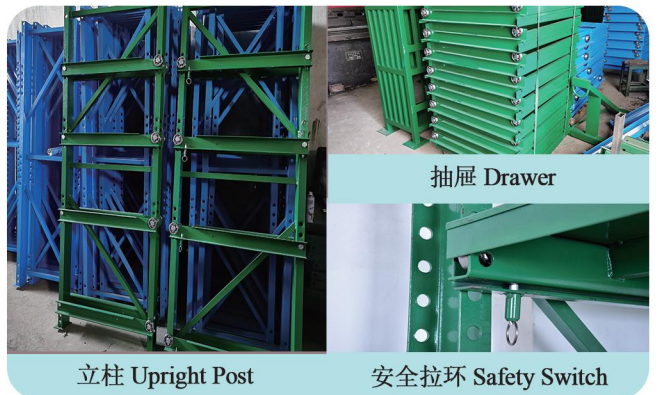
1. 适用于储存长物料;
2. 组合式结构, 拆装简便快捷;
3. 结构稳定, 安全性高;
4. 可搭配阁楼和移动货架使用。

## Mold Rack 模具架

1. Storing heavy goods such as molds and motors;
2. Small floor space and large storage capacity;
3. Load-capacity: 800-3000kgs/layer.



1. 用于存放模具、马达等重型货物;
2. 占地面积小, 存储容量大;
3. 承重能力强, 重型每层承载可达3T。





## Tool Cabinet 工具柜

1. Suitable for industrial production and automotive repair fields;
  2. The maximum load-capacity :100kgs/drawer;
  3. The drawers and cabinet can be freely combined.
1. 适用于工业生产、汽车维修等行业;
  2. 抽屉最大承重可达100kgs/层;
  3. 抽屉及柜体可自由组合。

## Tool Trolley 工具车

1. Equipped with wheels for easy movement;
  2. Drawers and hanging boards can be freely combined to meet different needs;
  3. Tools are more accessible, improving work efficiency.
1. 配备脚轮，方便移动;
  2. 抽屉、挂板自由组合，满足不同需求;
  3. 工具取用更便捷，提高工作效率。



## Workbench 工作台

1. Strong table frame, can bear 1000kgs;
  2. A variety of accessories meet various demands;
  3. Multiple desktop options.
1. 坚固的桌体框架，承重可达1T;
  2. 多种配件满足多种需求;
  3. 多种台面选择。



## Storage Cage 仓储笼



1. It can be stacked in 3 to 4 layers;
2. Foldable, space-saving;
3. It can be equipped with casters for easy movement;
4. It is widely applied in the hardware and building accessories industries.

1. 可堆叠3-4层;
2. 可折叠, 节省空间;
3. 可配脚轮, 方便移动;
4. 广泛应用于五金、建筑配件行业。

## Stacking Rack 堆垛架

1. It can be stacked in 3-4 layers;
2. Foldable, space-saving;
3. Uniform specifications for easy counting;
4. The goods are directly stored for convenient transportation by forklifts.

1. 可堆叠3-4层;
2. 可折叠, 节省空间;
3. 规格统一, 便于清点;
4. 货物直接储存, 方便叉车运输。



# Supermarket Rack 超市货架



Type 类型	长 (L) mm	宽 (W) mm	高 (H) mm	颜色 Color	承重/每层 Load-capacity
Single-sided 单面	700L	450W	1200 1500 1800 2000 2200	Semigloss white/ grey/black	40-120kgs
Double-sided 双面		850W			
Single-sided 单面	900L	450W			
Double-sided 双面		850W			
Single-sided 单面	1200L	450W			
Double-sided 双面		850W			

# Pallet 卡板



**Plastic Pallet**  
塑料托盘

**Steel Pallet**  
钢托盘

**Wooden Pallet**  
木托盘